

HDL[®]

RESIDENTIAL
HOSPITALITY
COMMERCIAL
AUTOMATION

Tel.: 0086 020 8557 1381
Fax: 0086 020 8552 0532
Email: sales@hdlautomation.com



www.hdlautomation.com



Discover the new
ELEGANT
DLP Touch Panel

HDL[®]

www.hdlautomation.com



What's better than color?



Black

What is the DLP Touch?

The DLP Touch is an eye-catching intelligent panel clad in a seamless glass finish, which is able to fully control your home.





Seven different pages

Every page has eight different buttons with visualized functions, and percentage indicators. Displayed on an ultra-clear LCD screen with LED button indication, at a glance you can know which devices are active and change their status instantly.

On a single panel there are a total of 56 buttons, which are able to provide complete control over even the largest homes.

Pink

- Three pages dedicated to lighting
- One page dedicated to air conditioning
- One page dedicated to background music
- One page dedicated to floor heating
- One page dedicated to security

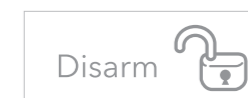
Each page can be fully customized to meet your exact requirements.



Purple

Customizable icons, labels, and fonts

Every page can be tailored with both customizable icons and functions. To give you a head start HDL offers you a large icon-library which can be updated instantly with your own designs. With the ability to display your own messages, notifications, and other essential information each DLP Touch Panel is truly one of a kind.





Green

Shortcuts

Directly access your most used pages via touching one of four icons. This instant jump to your favorite page makes navigation intuitive not only for members of the family, but visitors, friends, and the elderly.



Light
Blue

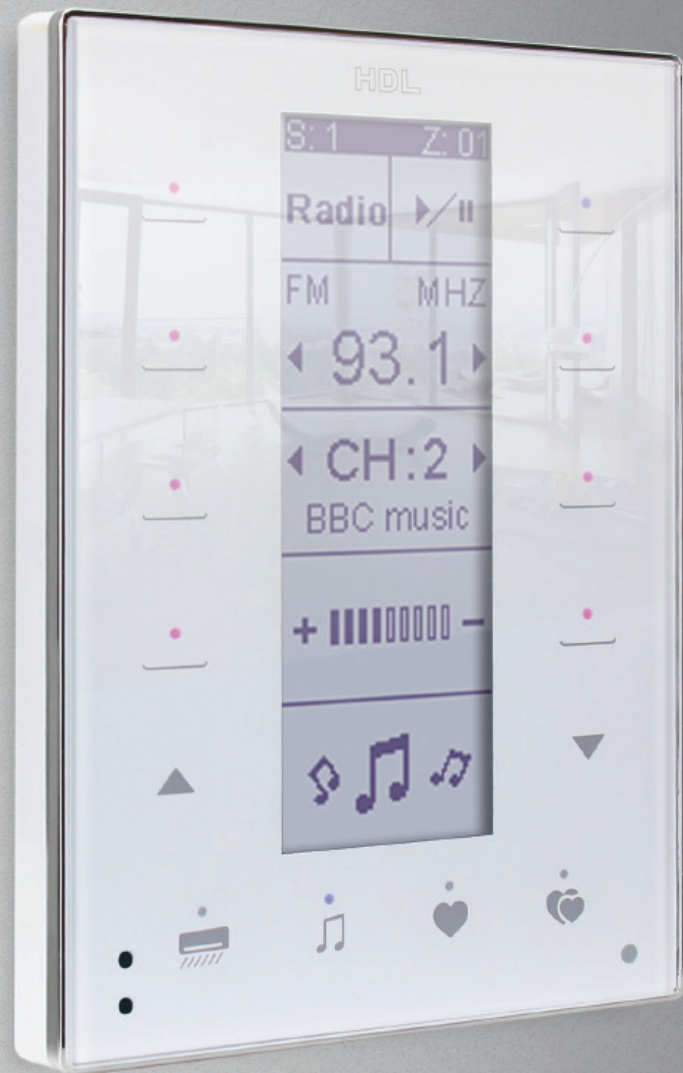
Special Features

Customizable Display

- Change the language
- Change the Icons and fonts
- Change the button indication colors
- Set a password to lock/unlock the panel

Full Control

- Manage scenes
- Manage sequences
- Control your appliances
- Change your dimming levels



White

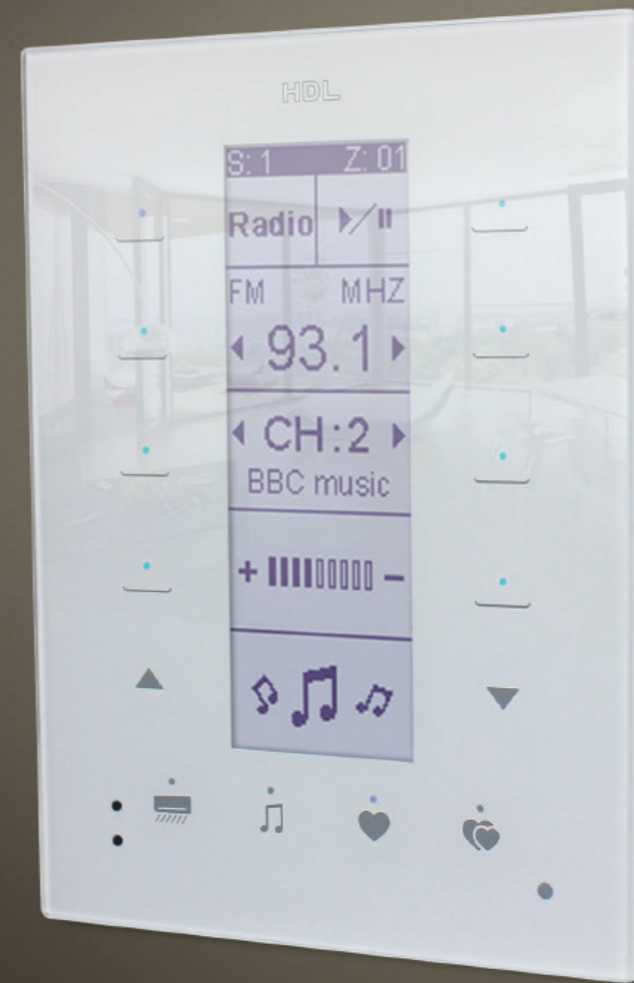
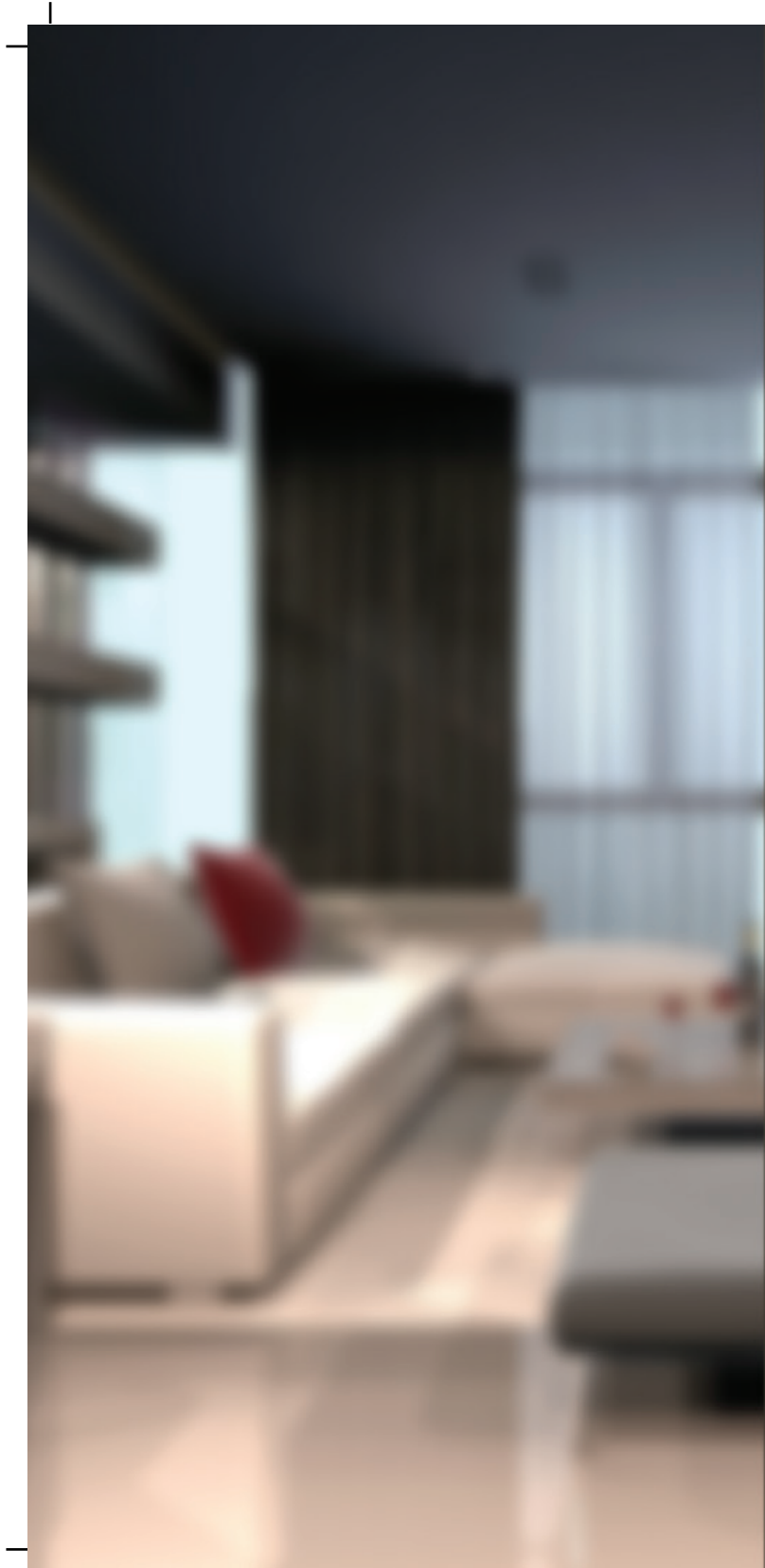
Additional Features

Advanced capabilities

- Built-in temperature sensor
- Optional IR receiver
- Compatible with security solutions
- Innovative capacitive control pads

Intelligent display technology

- Proximity activated display
- Current time, date, and temperature display
- Customizable LCD brightness
- Customizable LED brightness



NEW FEATURE

Flush Mount



The revolutionary flush mount is able to create an almost seamless integration between wall and panel. Reducing the prominence of the display significantly, the DLP Touch is able to harmoniously blend with a rooms exiting décor, while retaining its unique design aesthetic.

This avant-garde blend of elegance, technology, and minimalism perfectly combines into an unassuming sophistication suitable for homes of any style or age.

RGB Status indication



Dual status indication

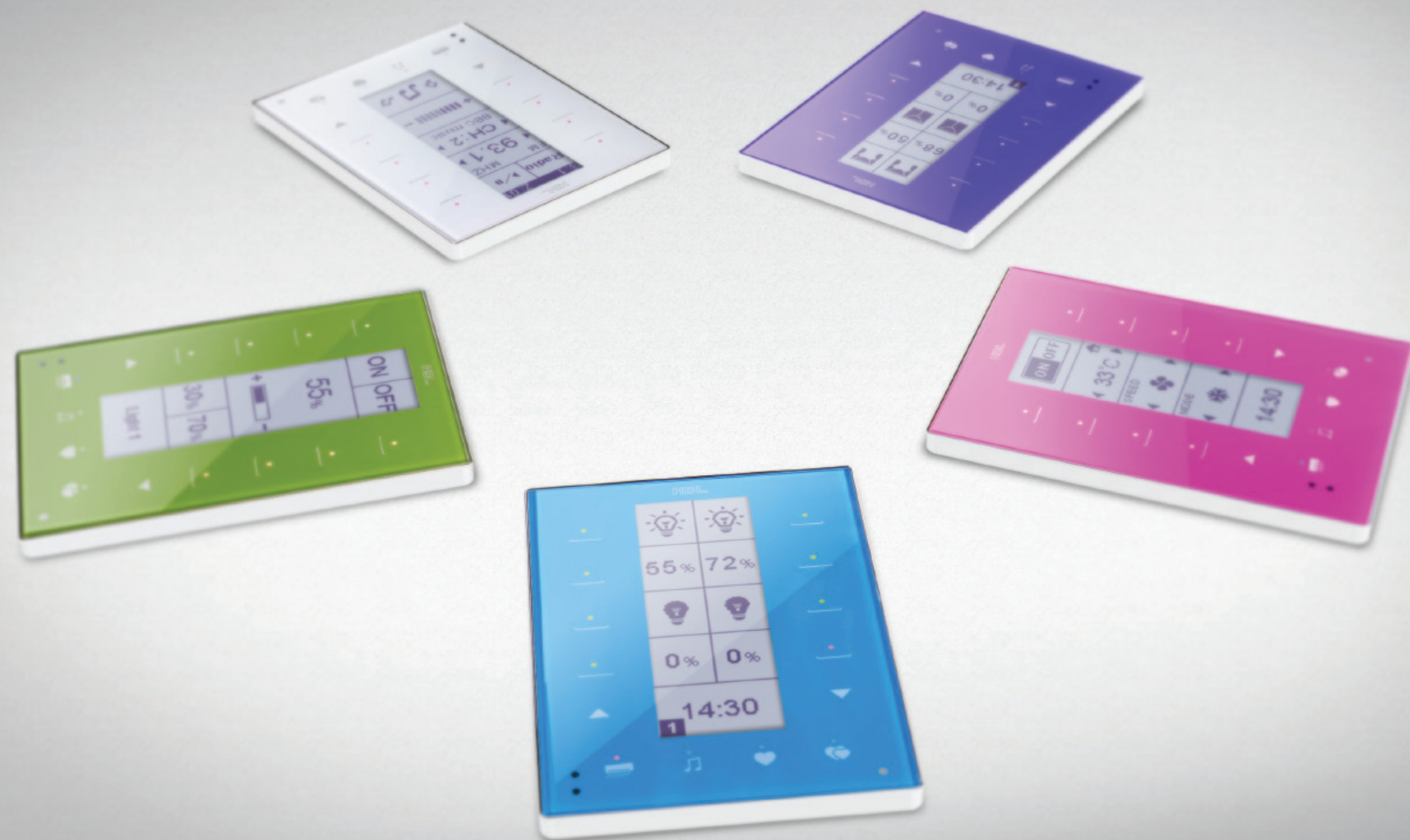
Above each button a dedicated LED is able to provide two separate colors, depending on the current target being controlled and its activity status. Each LED can be configured so that a user is instantly aware which device is being controlled, and if it is active or not.

For different pages, different colors

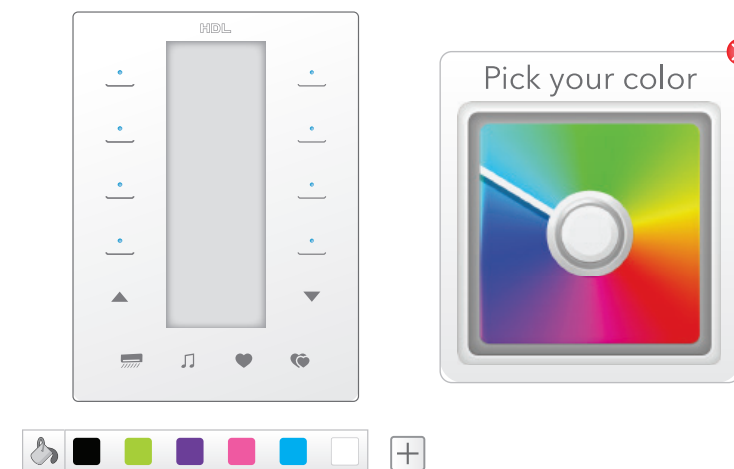
Every page of the DLP is able to have a different colored theme, thanks to the RGB LED button indication. This makes page recognition from a distance, or in low light, fast and effective.

Audible activity confirmation

Each button can be configured to not only display a customizable color, but to emit a subtle 'beep' after each time it is pressed.



What's your favorite color?



Customize your DLP Touch with a logo

Each fascia can be fully customized with your company logo, or corporate colors. This branding enables a panel to reinforce the visual identity of a building or business, and truly complement its surroundings.

Choose the color that defines your home's personality

With the possibility of a fully customizable fascia color you can choose your favorite picture, or image texture, that perfectly matches your lifestyle or interior design concept.